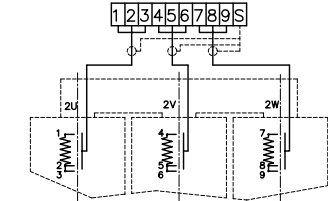
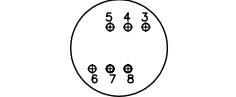


CONNECTION SCHEME 3 PT100 OHM

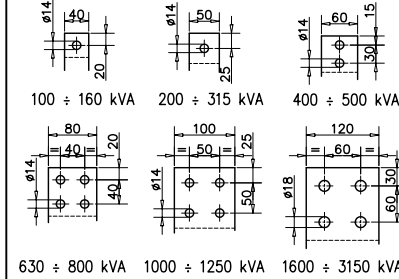


TAPS FOR PRIMARY VARIATION

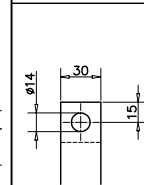


VAR. %	POSITIONS
+5%	6-5
+2.5%	5-7
0	7-4
-2.5%	4-8
-5%	8-3

SECONDARY TERMINAL



PRIMARY TERMINAL



- 1 LIFTING EYES
- 2 SECONDARY TERMINAL
- 3 RATING PLATE
- 4 NEUTRAL TERMINAL
- 5 PRIMARY TAPPING CHANGE
- 6 PRIMARY WINDING
- 7 CORE
- 8 PULLING EYES
- 9 HEARTING PLATE
- 10 TROLLEY
- 11 CONNECTION BOX
- 12 PRIMARY TERMINAL
- 13 HOUSING IP20-23-31

We reserve the right to change the technical datas without advising

kVA	a (mm)	b (mm)	c (mm)	d (mm)	e (mm)	f (mm)	g (mm)	h (mm)	m (mm)	n (mm)	o (mm)	p (mm)	q (mm)	r (mm)	s (mm)	t (mm)	Weight (Kg)	Air for cooling (mc/min)	A (mm)	B (mm)	C (mm)	Weight (Kg)	Po (W)	Pcc 75° (W)	Pcc 120° (W)	Vcc (%)	Io (%)	LpA (dB)	$\eta$ 4/4 $\cos\phi=1$	$\eta$ 4/4 $\cos\phi=0.9$	$\eta$ 4/4 $\cos\phi=0.8$
100	1290	730	1245	400	140	230	145	320	1225	1155	875	520	620	125	40	35	550	8	1750	1100	1600	250	480	1700	1955	6	2.3	48	97.86	97.63	97.34
160	1290	730	1245	400		240	155	320	1225	1155	875						700	12					650	2500	2850		2	51	98.03	97.81	97.53
250	1290	760	1340	440		255	170	350	1315	1215	895						1000	15					880	3300	3800		1.8	54	98.32	98.14	97.91
315	1290	760	1380	440		260	175	350	1355	1255	875						1150	18					1030	4000	4600		1.7	56	98.40	98.22	98.00
400	1380	835	1480	460		270	185	350	1465	1340	970	670	770				1300	22	1200	4800	5500	1.5	57	98.50	98.33		98.12				
500	1380	835	1550	460		270	185	350	1535	1410	970						1450	26	1400	5900	6780	1.4	57	98.54	98.37		98.17				
630	1470	855	1675	480		290	200	370	1655	1520	1180						1800	31	1650	6800	7800	1.3	58	98.65	98.50		98.32				
800	1470	855	1775	500	290	200	370	1755	1620	1270	2150	36	2000	8000	9200	1.1	59	98.75	98.61	98.43											
1000	1680	990	1955	530	250	305	210	390	1930	1775	1370	820	1000	200	70	50	2550	41	2250	1350	2400	380	2300	9400	10800	1	60	98.83	98.70	98.53	
1250	1680	1010	2055	570		315	220	410	2030	1875	1370						3000	50					2700	11500	13100	0.9	62	98.86	98.73	98.58	
1600	1780	1010	2205	580		330	230	410	2175	1985	1600						3500	60					3100	14000	15800	0.9	62	98.93	98.81	98.66	
2000	1780	1140	2355	610		345	245	440	2325	2135	1600	4600	72				4000	16000	18000	0.8	63	99.00	98.88	98.75							
2500	1950	1150	2465	650		390	270	450	2435	2245	1630	5200	85				5000	19000	21850	0.7	65	99.05	98.94	98.81							
3150	2240	1220	2390	750		395	275	520	2360	2170	1665	6550	93				5600	21000	24150	0.6	66	99.15	99.06	98.94							